

Godwin Dri-Prime[®] Pumps

A complete range of automatic self-priming pumps
and accessories for immediate despatch.



CD150M



CD100M



CD300M



HL250M



CD150M
Hush-Pac

godwin
pumps[®]



www.godwinpumps.co.uk

Company Profile

Godwin Pumps – A Fusion of Exceptional Service and Superior Design

For our customers, Godwin Pumps is synonymous with the best portable pump available backed by the best possible rental and sales service in the industry, a reputation built on the combined strengths of two formerly separate companies.

When Godwin Pumps of America was born in 1976, our goal was to provide the finest customer service and be the best pump rental and sales company in the world. Realising the first step in reaching this goal was to match his “whatever it takes” philosophy with an exceptional product, founder, John Michael Paz chose the Godwin Dri-Prime® pump manufactured by Godwin Pumps Limited in Gloucestershire, England.

Nestled in the Coln Valley on the edge of the Cotswolds, Godwin Pumps Limited has been manufacturing pumps since the end of the 19th century. From the early days when Harold Joynes Godwin set out to provide windmills and deep well piston pumps, through to the development of the Dri-Prime automatic self-priming pump,

Godwin Pumps Limited continually provides unmatched quality in design.

After working hand in hand for over 25 years, Godwin Pumps of America acquired Godwin Pumps Ltd, combining outstanding customer service and first class design expertise, and making Godwin Pumps the undisputed leader in the portable pumping industry.



John Michael Paz, Chairman



Service, 24 Hours-a-Day,
7 Days-a-Week

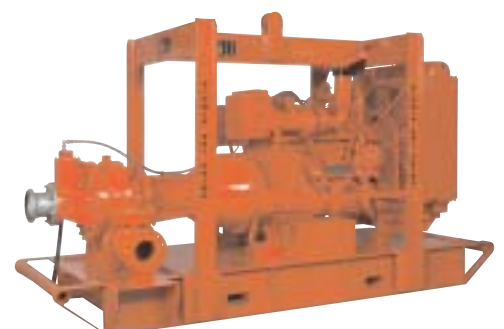
Rental and Sales Expertise

Godwin Pumps has built its reputation by providing reliable, durable equipment and guaranteed service to our customers. We do more than just pump rentals and sales – we are the dedicated support to national industries. Every day we work to provide solutions for our customers – evident in our commitment to 24 hours-a-day, 7 days-a-week service. And customer support doesn't stop at the front door. Application specialists not only ensure that the equipment



Godwin CD150M Hush-Pac

we sell or rent is right for the job, but also continue to work with our customers throughout installation and testing, until the pumping system is up and running. Our newly expanded spares and service center provides over 6,000 square metres dedicated to pump service and spares inventory.



Godwin HL160M Extreme High Head Dri-Prime® Pump

Unmatched Quality

At Godwin we have a sense of pride in our products and what we achieve as a manufacturer. By using modern machinery and the latest technology, we ensure that products manufactured and supplied by our company will be of the highest possible standards attainable. Our company's Quality Management System is approved to the latest ISO 9001 : 2000 requirements for Design, Manufacture, Commissioning and Service. We also hold FM approval and a special approval to manufacture fire pump sets to LPCB (Loss Prevention Council Board) approval. Our technical



department uses sophisticated Computer Aided Drafting (CAD) and Solid Modeling Facilities to supplement the expertise and experience of its design team as well as offering in-depth technical support, fundamental design and application analysis.

Today, the company's products are in service all over the world in the construction industry, oil refineries, chemical plants, mines and quarries, water distribution, and fire fighting.

Godwin Pumps Products

As the keystone of the Godwin Pumps product line, the Dri-Prime is the pump of choice for all sorts of temporary and permanent applications. Rugged and reliable, the Dri-Prime out-performs the competition at every turn with features such as automatic self-priming to 8.5 metres, dry-running capabilities, solids handling and high discharge heads.



Godwin HL130M single stage Dri-Prime pump achieves heads to 185 metres



Godwin expands its line of HL Series High Head Dri-Prime Pumps

*Other companies may imitate, but none can surpass.
That's our continuing commitment to you.*

– John M. Paz, Chairman



Applications

Godwin Pumps maintains a complete range of portable pumps for immediate rental. The Dri-Prime® pump has proven itself as the pump of choice for all sorts of temporary and permanent applications. Rugged and reliable, the Dri-Prime out-performs the competition at every turn with features such as automatic self priming to 8.5 metres, dry-running capabilities, solids handling and high discharge heads. And to complete the picture, Godwin Pumps offers outstanding service and support seven days-a-week, 24 hours-a-day, doing what it takes to meet the needs of our customers. With a winning combination of the Godwin Dri-Prime pump and unparalleled customer service, it is no wonder that Godwin Pumps has become the industry leader in portable pumping today.



CD150M units used in bridge construction

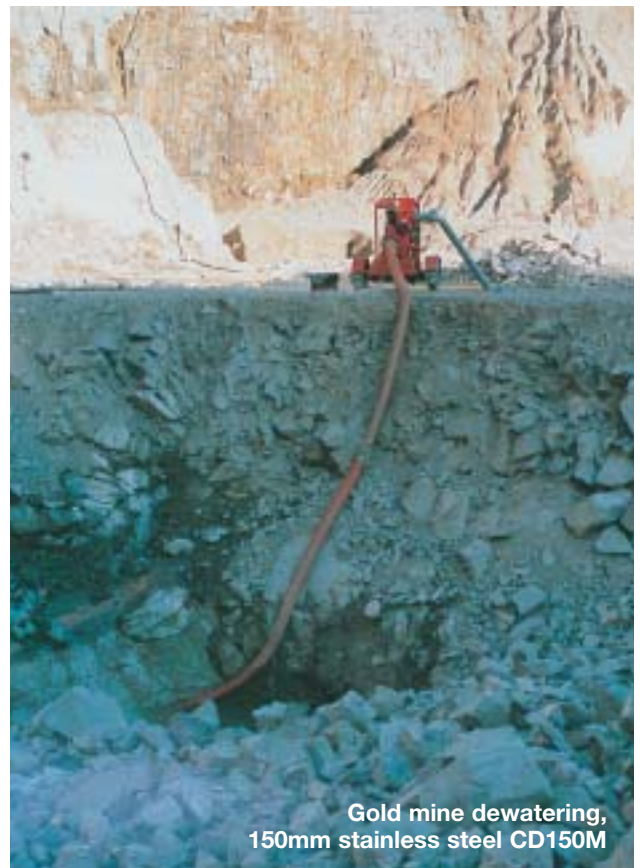
Pump Rentals



ISO 150 vacprime units used for a barge loadout



Refinery bypass, four 300mm pumps



Gold mine dewatering, 150mm stainless steel CD150M



CD150M Hush-Pac 150mm Dri-Prime for Stormwater Sewer Bypass



300mm DPC300, Construction site dewatering



Pump station bypass, four CD160M Dri-Prime pumps



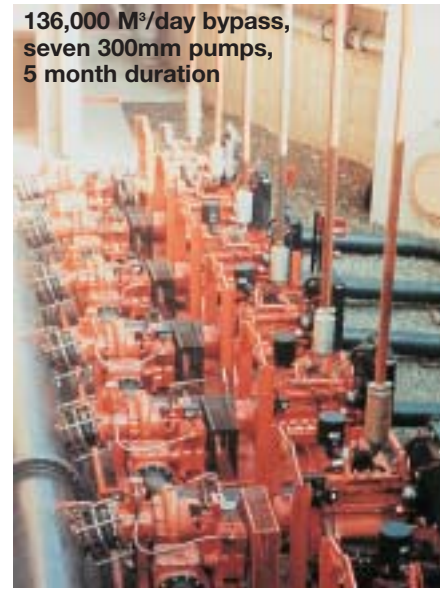
Hush-Pac Dri-Prime pumps in a drainage application during a pipeline installation



Construction dewatering, DPC300 and CD150M



HDPE discharge pipe in a sewage treatment plant



136,000 M³/day bypass, seven 300mm pumps, 5 month duration



Godwin Quick Disconnect pipe and couplings



Two permanently installed 150mm CD150M electric drive pumps, API separator sludge removal



General Purpose, Solids Handling Godwin Dri-Prime® Pumps

CD75M 50mm/75mm

| Capacity M ³ /Hr. | Total Head Metres | Solids Handling Branch Sizes Standard Engine | 40mm 50mm/75mm Yanmar L100 AE 4.5 kw @ 2500 rpm |
|---------------------------------|----------------------|--|--|
| 54 | 4.5 | | |
| 37 | 9 | Standard Mounting | Site Trolley |
| 35 | 13 | Length | 1100mm |
| 25 | 15 | Width | 652mm |
| 12 | 18 | Height | 900mm |
| | | Approx. Wet Weight | 137 kg. |
| | | Fuel Tank Capacity | 5.5 litres |

CD80D 75mm

| Capacity M ³ /Hr. | Total Head Metres | Solids Handling Branch Sizes Standard Engine | 40mm 75mm Kubota Z482B 4.6 kw @ 2000 rpm |
|---------------------------------|----------------------|--|---|
| 71 | 6 | | |
| 63 | 9 | Standard Mounting | Site Trolley |
| 52 | 12 | Length | 1452mm |
| 31 | 15 | Width | 990mm |
| 5 | 18 | Height | 1232mm |
| | | Approx. Wet Weight | 522 kg. |
| | | Fuel Tank Capacity | 52 litres |

CD100M 100mm

| Capacity M ³ /Hr. | Total Head Metres | Solids Handling Branch Sizes Standard Engine | 45mm 100mm Perkins 403.15 14 kw @ 1800 rpm |
|---------------------------------|----------------------|--|---|
| 170 | 6 | | |
| 155 | 9 | Standard Mounting | Skid Base |
| 140 | 12 | Length | 1755mm |
| 120 | 15 | Width | 881mm |
| 100 | 18 | Height | 1375mm |
| | | Approx. Wet Weight | 910 kg. |
| | | Fuel Tank Capacity | 73 litres |

CD103M 100mm

| Capacity M ³ /hr. | Total Head Metres | Solids Handling Branch Sizes Standard Engine | 75mm 100mm Perkins 404-22 22.7 kw @ 1800 rpm |
|---------------------------------|----------------------|--|---|
| 190 | 18 | | |
| 170 | 23 | Standard Mounting | Skid Base |
| 120 | 28 | Length | 1950mm |
| 65 | 33 | Width | 900mm |
| 0 | 38 | Height | 1315mm |
| | | Approx. Wet Weight | 1097 kg. |
| | | Fuel Tank Capacity | 168 litres |

CD150L 150mm

| Capacity M ³ /Hr. | Total Head Metres | Solids Handling Branch Sizes Standard Engine | 45mm 150mm Perkins 404-22 28 kw @ 2200 rpm |
|---------------------------------|----------------------|--|---|
| 223 | 11 | | |
| 200 | 15 | Standard Mounting | Skid Base |
| 160 | 23 | Length | 1600mm |
| 133 | 28 | Width | 881mm |
| 99 | 33 | Height | 1375mm |
| | | Approx. Wet Weight | 975 kg. |
| | | Fuel Tank Capacity | 73 litres |

CD150M 150mm

| Capacity M ³ /Hr. | Total Head Metres | Solids Handling Branch Sizes Standard Engine | 65mm 150mm Perkins 404-22 18.5 kw @ 1500 rpm |
|---------------------------------|----------------------|--|---|
| 377 | 6 | | |
| 328 | 9 | Standard Mounting | Skid Base |
| 273 | 12 | Length | 1600mm |
| 191 | 15 | Width | 1100mm |
| 71 | 18 | Height | 1440mm |
| | | Approx. Wet Weight | 1097 kg. |
| | | Fuel Tank Capacity | 168 litres |

CD160M 150mm

| Capacity M ³ /Hr. | Total Head Metres | Solids Handling Branch Sizes Standard Engine | 75mm 150mm Perkins 1106D-E66TA 106.7 kw @ 2000 rpm |
|---------------------------------|----------------------|--|---|
| 400 | 58 | | |
| 355 | 63 | Standard Mounting | Skid Base |
| 285 | 68 | Length | 2800mm |
| 200 | 73 | Width | 1300mm |
| | | Height | 1800mm |
| | | Approx. Wet Weight | 1903 kg. |
| | | Fuel Tank Capacity | 255 litres |

CD225M 200mm

| Capacity M ³ /Hr. | Total Head Metres | Solids Handling Branch Sizes Standard Engine | 75mm 200mm Perkins 1104C-44TA 82 kw @ 2000 rpm |
|---------------------------------|----------------------|--|---|
| 710 | 12 | | |
| 628 | 21 | Standard Mounting | Skid Base |
| 505 | 30 | Length | 2600mm |
| 321 | 40 | Width | 1300mm |
| 246 | 43 | Height | 1750mm |
| | | Approx. Wet Weight | 1908 kg. |
| | | Fuel Tank Capacity | 255 litres |

CD250M 250mm

| Capacity M ³ /Hr. | Total Head Metres | Solids Handling Branch Sizes Standard Engine | 75mm 250mm Perkins 1106D-E66TA 108 kw @ 2200 rpm |
|---------------------------------|----------------------|--|---|
| 840 | 13 | | |
| 760 | 23 | Standard Mounting | Skid Base |
| 620 | 33 | Length | 2750mm |
| 460 | 43 | Width | 1375mm |
| 330 | 53 | Height | 1700mm |
| | | Approx. Wet Weight | 2410 kg. |
| | | Fuel Tank Capacity | 290 litres |

DPC300 300mm

| Capacity M ³ /Hr. | Total Head Metres | Solids Handling Branch Sizes Standard Engine | 95mm 300mm Perkins 1106D-E66TA 108 kw @ 2200 rpm |
|---------------------------------|----------------------|--|---|
| 1100 | 9 | | |
| 1080 | 12 | Standard Mounting | Skid Base |
| 995 | 15 | Length | 3550mm |
| 905 | 18 | Width | 1425mm |
| 800 | 21 | Height | 1865mm |
| | | Approx. Wet Weight | 2802 kg. |
| | | Fuel Tank Capacity | 370 litres |

CD300M 300mm

| Capacity M ³ /Hr. | Total Head Metres | Solids Handling Branch Sizes Standard Engine | 95mm 300mm Perkins 1106D-E66TA 95 kw @ 1500 rpm |
|---------------------------------|----------------------|--|--|
| 1199 | 18 | | |
| 1000 | 24 | Standard Mounting | Skid Base |
| 801 | 30 | Length | 3550mm |
| 699 | 32 | Width | 1700mm |
| 500 | 35 | Height | 1800mm |
| | | Approx. Wet Weight | 2811 kg. |
| | | Fuel Tank Capacity | 442 litres |

CD400M 400mm

| Capacity M ³ /Hr. | Total Head Metres | Solids Handling Branch Sizes Standard Engine | 125mm 400mm Volvo TAD941VE 204 kw @ 1800 rpm |
|---------------------------------|----------------------|--|---|
| 1980 | 15 | | |
| 1800 | 21 | Standard Mounting | Skid Base |
| 1458 | 27 | Length | 3950mm |
| 1225 | 33 | Width | 1700mm |
| 710 | 38 | Height | 1800mm |
| | | Approx. Wet Weight | 6367 kg. |
| | | Fuel Tank Capacity | 450 litres |



High Head and Jetting Dri-Prime® Pumps

| HL80M | | 100mm x 80mm | |
|---------------------------------|----------------------|---|---|
| Capacity M ³ /Hr. | Total Head Metres | Solids Handling Branch Sizes | 25mm 100mm suction 80mm discharge |
| 95 | 55 | Standard Engine | Perkins 1104C-44 54 kw @ 2200 rpm |
| 90 | 58 | Standard Mounting Skid Base Length Width Height | 1901mm 1100mm 1705mm |
| 83 | 63 | | 1033 kg. |
| 80 | 68 | | 160 litres |
| 65 | 73 | | |

| HL100M | | 100mm x 100mm | |
|---------------------------------|----------------------|---|---|
| Capacity M ³ /Hr. | Total Head Metres | Solids Handling Branch Sizes Engine | 35mm 100mm Perkins 1104C-44TA 82 kw @ 2000 rpm |
| 223 | 70 | Standard Mounting Skid Base Length Width Height | 2575mm 1275mm 1815mm |
| 201 | 82 | | 2000 kg. |
| 172 | 94 | | 255 litres |
| 153 | 101 | | |
| 122 | 107 | | |

| HL125M | | 150mm x 100mm | |
|---------------------------------|----------------------|---|--|
| Capacity M ³ /Hr. | Total Head Metres | Solids Handling Branch Sizes | 35mm 150mm suction 100mm discharge |
| 190 | 63 | Standard Engine | Perkins 1104C-44TA 82 kw @ 2000 rpm |
| 180 | 73 | Standard Mounting Skid Base Length Width Height | 2575mm 1275mm 1815mm |
| 170 | 78 | | 2004 kg. |
| 150 | 83 | | 250 litres |
| 90 | 93 | | |

| HL150M | | 150mm x 150mm | |
|---------------------------------|----------------------|---|---|
| Capacity M ³ /Hr. | Total Head Metres | Solids Handling Branch Sizes | 35mm 150mm Perkins 1106D-E66TA 106.7 kw @ 2000 rpm |
| 290 | 40 | Standard Engine | 106.7 kw @ 2000 rpm |
| 280 | 52 | Standard Mounting Skid Base Length Width Height | 2580mm 1300mm 1750mm |
| 265 | 64 | | 2160 kg. |
| 240 | 70 | | 290 litres |
| 220 | 76 | | |

| HL200M | | 200mm x 150mm | |
|---------------------------------|----------------------|---|--|
| Capacity M ³ /Hr. | Total Head Metres | Solids Handling Branch Sizes | 38mm 200mm suction 150mm discharge |
| 505 | 33 | Standard Engine | Perkins 1106D-E66TA 99 kw @ 1600 rpm |
| 460 | 46 | Standard Mounting Skid Base Length Width Height | 3300mm 1300mm 1815mm |
| 433 | 52 | | 2369 kg. |
| 388 | 58 | | 330 litres |
| 316 | 64 | | |

| HL225M | | 250mm x 200mm | |
|---------------------------------|----------------------|---|--|
| Capacity M ³ /Hr. | Total Head Metres | Solids Handling Branch Sizes | 65mm 250mm suction 200mm discharge |
| 840 | 83 | Standard Engine | Volvo TWD1240VE-275 259 kw @ 2000 rpm |
| 650 | 93 | Standard Mounting Skid Base Length Width Height | 4300mm 1150mm 2300mm |
| 440 | 103 | | 4826 kg. |
| 324 | 108 | | 400 litres |
| 170 | 113 | | |



| HL8M | | 250mm x 200mm | |
|---------------------------------|----------------------|---|--|
| Capacity M ³ /Hr. | Total Head Metres | Solids Handling Branch Sizes | 75mm 250mm suction 200mm discharge |
| 770 | 73 | Standard Engine | Caterpillar C15 313 kw @ 1800 rpm |
| 700 | 78 | Standard Mounting Skid Base Length Width Height | 4760mm 1650mm 2375mm |
| 605 | 83 | | 4321 kg. |
| 550 | 88 | | 730 litres |
| 0 | 93 | | |

| HL250M | | 300mm x 250mm | |
|---------------------------------|----------------------|---|--|
| Capacity M ³ /Hr. | Total Head Metres | Solids Handling Branch Sizes | 65mm 300mm suction 250mm discharge |
| 1175 | 53 | Standard Engines | Caterpillar C15 313 kw @ 2000 rpm |
| 1062 | 73 | Standard Mounting Skid Base Length Width Height | 4600mm 1804mm 2800mm |
| 954 | 83 | | 5101 kg. |
| 820 | 93 | | 400 litres |
| 615 | 108 | | |

Extreme High Head Pumps

| HL110M | | 100mm x 80mm | |
|---------------------------------|----------------------|---|--|
| Capacity M ³ /Hr. | Total Head Metres | Solids Handling Branch Sizes | 20mm 100mm suction 80mm discharge |
| 110 | 153 | Standard Engine | Perkins 1106D-E66TA 108 kw @ 2200 rpm |
| 95 | 163 | Standard Mounting Skid Base Length Width Height | 2600mm 1275mm 1815mm |
| 80 | 173 | | 2010 kg. |
| 65 | 178 | | 270 litres |
| 50 | 183 | | |

| HL130M | | 150mm x 100mm | |
|---------------------------------|----------------------|---|--|
| Capacity M ³ /Hr. | Total Head Metres | Solids Handling Branch Sizes | 22mm 150mm suction 100mm discharge |
| 319 | 113 | Standard Engine | Caterpillar C9 207 kw @ 2000 rpm |
| 303 | 123 | Standard Mounting Skid Base Length Width Height | 4000mm 1540mm 2260mm |
| 273 | 143 | | 4175 kg. |
| 227 | 163 | | 460 litres |
| 180 | 173 | | |

| HL160M | | 200mm x 150mm | |
|---------------------------------|----------------------|---|--|
| Capacity M ³ /Hr. | Total Head Metres | Solids Handling Branch Sizes | 35mm 200mm suction 150mm discharge |
| 504 | 103 | Standard Engine | Caterpillar C15 313 kw @ 2000 rpm |
| 450 | 123 | Standard Mounting Skid Base Length Width Height | 4400mm 1670mm 2633mm |
| 415 | 143 | | 4526 kg. |
| 325 | 163 | | 400 litres |
| 180 | 188 | | |

Heidra® Hydraulic Submersible Pumps

HEIDRA 80 80mm

| Capacity M ³ /Hr. | Total Head Metres | Solids Handling Branch Sizes | 40mm 80mm |
|------------------------------|-------------------|------------------------------|--------------------|
| 60 | 10 | Standard Engine | Kubota Z482B |
| 50 | 13 | Standard Mounting | 5.36 kw @ 2200 rpm |
| 40 | 15 | | Skid Base |
| 30 | 17 | | PowerPack Pump |
| 20 | 18 | Length | 1452mm 354mm |
| | | Width | 990mm 404mm |
| | | Height | 1232mm 555mm |
| | | Approx. Wet Weight | 650 kg. 45 kg. |
| | | Fuel Tank Capacity | 52 litres |

HEIDRA 80HH 80mm

| Capacity M ³ /Hr. | Total Head Metres | Solids Handling Branch Sizes | 25mm 80mm |
|------------------------------|-------------------|------------------------------|------------------|
| 100 | 50 | Standard Engine | Perkins 1104-44 |
| 90 | 58 | Standard Mounting | 54 kw @ 2200 rpm |
| 80 | 65 | | Skid Base |
| 60 | 75 | | PowerPack Pump |
| 40 | 80 | Length | 2600mm 560mm |
| | | Width | 1300mm 610mm |
| | | Height | 1750mm 685mm |
| | | Approx. Wet Weight | 1908 kg. 165 kg. |
| | | Fuel Tank Capacity | 255 litres |

HEIDRA 100TD 100mm

| Capacity M ³ /Hr. | Total Head Metres | Solids Handling Branch Sizes | 40mm 100mm |
|------------------------------|-------------------|------------------------------|--------------------|
| 180 | 4 | Standard Engine | Perkins 403-15 |
| 170 | 6 | Standard Mounting | 17.5 kw @ 2200 rpm |
| 135 | 18 | | Skid Base |
| 90 | 26 | | PowerPack Pump |
| 45 | 32 | Length | 1755mm 485mm |
| | | Width | 881mm 420mm |
| | | Height | 1375mm 581mm |
| | | Approx. Wet Weight | 910 kg. 86 kg. |
| | | Fuel Tank Capacity | 73 litres |

HEIDRA 150 150mm

| Capacity M ³ /Hr. | Total Head Metres | Solids Handling Branch Sizes | 65mm 150mm |
|------------------------------|-------------------|------------------------------|--------------------|
| 400 | 8 | Standard Engine | Perkins 404-22 |
| 285 | 15 | Standard Mounting | 28.3 kw @ 2400 rpm |
| 170 | 23 | | Skid Base |
| 115 | 25 | | PowerPack Pump |
| | | Length | 1600mm 577mm |
| | | Width | 1100mm 514mm |
| | | Height | 1440mm 685mm |
| | | Approx. Wet Weight | 1097 kg. 161 kg. |
| | | Fuel Tank Capacity | 168 litres |

HEIDRA 150MR 150mm

| Capacity M ³ /Hr. | Total Head Metres | Solids Handling Branch Sizes | 65mm 150mm |
|------------------------------|-------------------|------------------------------|------------------|
| 400 | 15 | Standard Engine | Perkins 1104-44 |
| 285 | 30 | Standard Mounting | 54 kw @ 2200 rpm |
| 170 | 40 | | Skid Base |
| 115 | 45 | | PowerPack Pump |
| | | Length | 2600mm 577mm |
| | | Width | 1300mm 514mm |
| | | Height | 1750mm 685mm |
| | | Approx. Wet Weight | 4073 kg. 161 kg. |
| | | Fuel Tank Capacity | 255 litres |

HEIDRA 150HH 150mm

| Capacity M ³ /Hr. | Total Head Metres | Solids Handling Branch Sizes | 35mm 150mm |
|------------------------------|-------------------|------------------------------|----------------------|
| 250 | 70 | Standard Engine | John Deere 6068TF150 |
| 225 | 75 | Standard Mounting | 147 kw @ 2200 rpm |
| 200 | 85 | | Skid Base |
| 175 | 90 | | PowerPack Pump |
| 150 | 95 | Length | 3480mm 665mm |
| 125 | 100 | Width | 1345mm 775mm |
| | | Height | 1805mm 1275mm |
| | | Approx. Wet Weight | 4073 kg. 636 kg. |
| | | Fuel Tank Capacity | 275 litres |



Godwin Heidra 150VSG Hydraulic Submersible Pump with Slurry Gate. Slurry Gates Available in 100mm, 150mm, and 200mm models

HEIDRA 150V 150mm

| Capacity M ³ /Hr. | Total Head Metres | Solids Handling Branch Sizes | 127mm 150mm |
|------------------------------|-------------------|------------------------------|------------------|
| 400 | 3 | Standard Engine | Perkins 1104-44 |
| 340 | 8 | Standard Mounting | 54 kw @ 2200 rpm |
| 285 | 12 | | Skid Base |
| 225 | 17 | | PowerPack Pump |
| 115 | 25 | Length | 2600mm 580mm |
| | | Width | 1300mm 515mm |
| | | Height | 1750mm 815mm |
| | | Approx. Wet Weight | 1908 kg. 165 kg. |
| | | Fuel Tank Capacity | 255 litres |

HEIDRA 200 200mm

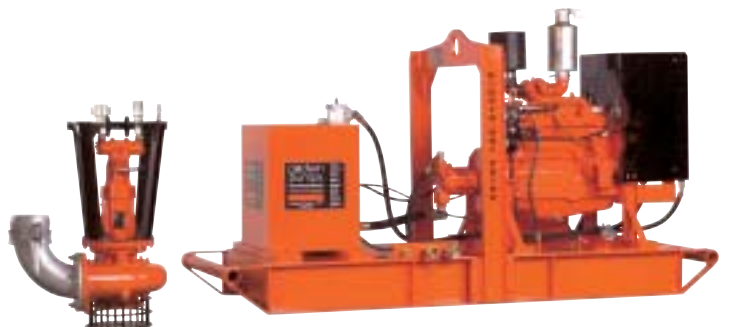
| Capacity M ³ /Hr. | Total Head Metres | Solids Handling Branch Sizes | 75mm 200mm |
|------------------------------|-------------------|------------------------------|-------------------|
| 680 | 9 | Standard Engine | Perkins 1104-44TA |
| 625 | 15 | Standard Mounting | 82 kw @ 2000 rpm |
| 530 | 21 | | Skid Base |
| 410 | 27 | | PowerPack Pump |
| 178 | 33 | Length | 2600mm 660mm |
| | | Width | 1300mm 585mm |
| | | Height | 1750mm 1245mm |
| | | Approx. Wet Weight | 1908 kg. 356 kg. |
| | | Fuel Tank Capacity | 255 litres |

HEIDRA 250 250mm

| Capacity M ³ /Hr. | Total Head Metres | Solids Handling Branch Sizes | 75mm 250mm |
|------------------------------|-------------------|------------------------------|-------------------|
| 750 | 6 | Standard Engine | Perkins 1104-44TA |
| 700 | 14 | Standard Mounting | 82 kw @ 2000 rpm |
| 550 | 20 | | Skid Base |
| 450 | 25 | | PowerPack Pump |
| 340 | 33 | Length | 2600mm 710mm |
| | | Width | 1300mm 685mm |
| | | Height | 1750mm 1245mm |
| | | Approx. Wet Weight | 1908 kg. 365 kg. |
| | | Fuel Tank Capacity | 255 litres |

HEIDRA 300 300mm

| Capacity M ³ /Hr. | Total Head Metres | Solids Handling Branch Sizes | 95mm 300mm |
|------------------------------|-------------------|------------------------------|-------------------|
| 1200 | 32 | Standard Engine | Caterpillar C9 |
| 1000 | 40 | Standard Mounting | 205 kw @ 2100 rpm |
| 700 | 45 | | Skid Base |
| 500 | 50 | | PowerPack Pump |
| 400 | 52 | Length | 4957mm 1401mm |
| | | Width | 2278mm 1052mm |
| | | Height | 2764mm 1830mm |
| | | Approx. Wet Weight | 7900 kg. 950 kg. |
| | | Fuel Tank Capacity | 625 litres |



Godwin Heidra 200 Hydraulic Submersible Pump

Fuel Consumption, Weights and Dimensions Are Approximate.

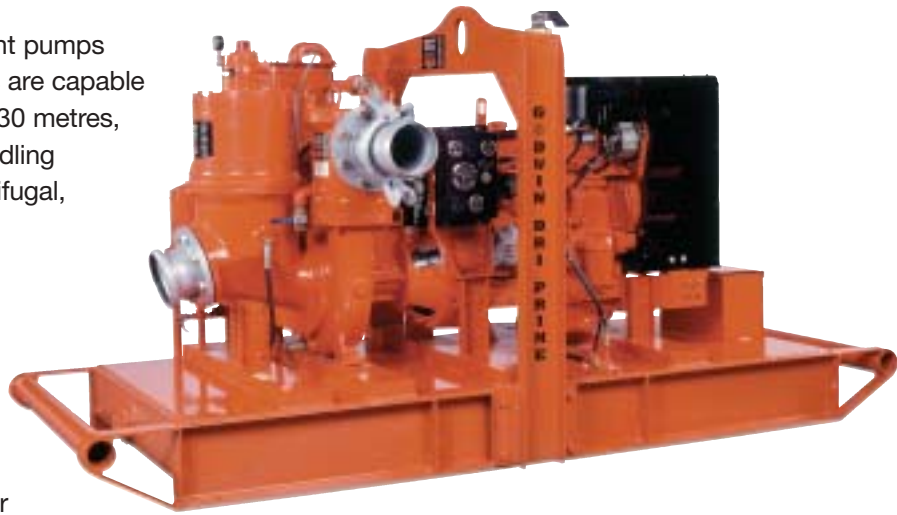
For Maximum Flows, Larger Pipes May Be Required.

Units are available with a variety of engines or with an electric drive.
Stainless steel construction is available.

Godwin Wellpoint Dewatering Systems

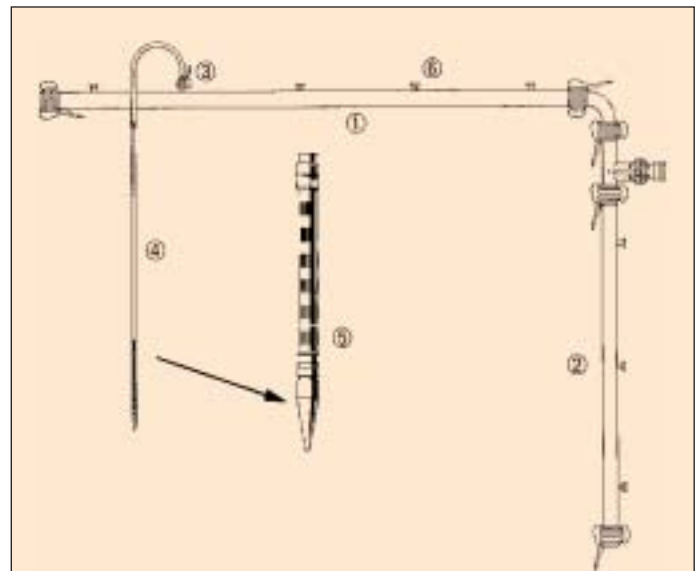
The Godwin MV series is a complete line of wellpoint pumps available for rental or sale. Godwin wellpoint pumps are capable of maximum flow rates to 725 M³/hr, total heads to 30 metres, solids handling up to 75mm in diameter and air handling capabilities to 200cfm. Each pump includes a centrifugal, single stage end suction pump with high volume, belt driven vacuum pump and single action float air water separation tank. Additional features include hardened wearparts and a dry running oil bath mechanical seal.

Self-jetting Godwin Wellpoints and header pipe complete a system that is easy to transport and construct. With up to 20 degree deflection at header coupling joints, the pipes adapt easily to site and ground conditions without loss of suction and pressure integrity.



Technical Notes

| | CD100MV | CD150MV | CD225MV |
|-------------------------------|----------------|----------------|------------------|
| Branch Size | 100mm | 150mm | 200mm |
| Max Flow (M ³ /hr) | 160 | 380 | 683 |
| Max Total Head | 25M | 30M | 30M |
| Air Handling - CFM | 25/60 | 60/120 | 120/200 |
| Solids Handling | 45mm | 65mm | 75mm |
| Diesel Engine | Perkins 403-15 | Perkins 404-22 | Perkins 1104-44T |
| KW@RPM | 14 @ 1800 | 18.5 @ 1800 | 60 @ 1800 |
| Standard Mount | Skid Base | Skid Base | Skid Base |
| Fuel Tank Capacity | 73 litres | 168 litres | 255 litres |
| Mechanical Seal Design | Oil Bath | Oil Bath | Oil Bath |
| Impeller (dia.) | 220mm | 260mm | 290mm |
| Length | 1755mm | 1750mm | 2600mm |
| Width | 1100mm | 1100mm | 1300mm |
| Height | 1375mm | 1500mm | 1750mm |
| Weight (dry) | 1050 kg. | 1325 kg. | 2150 kg. |



Godwin Quick Disconnect Dewatering Pipes

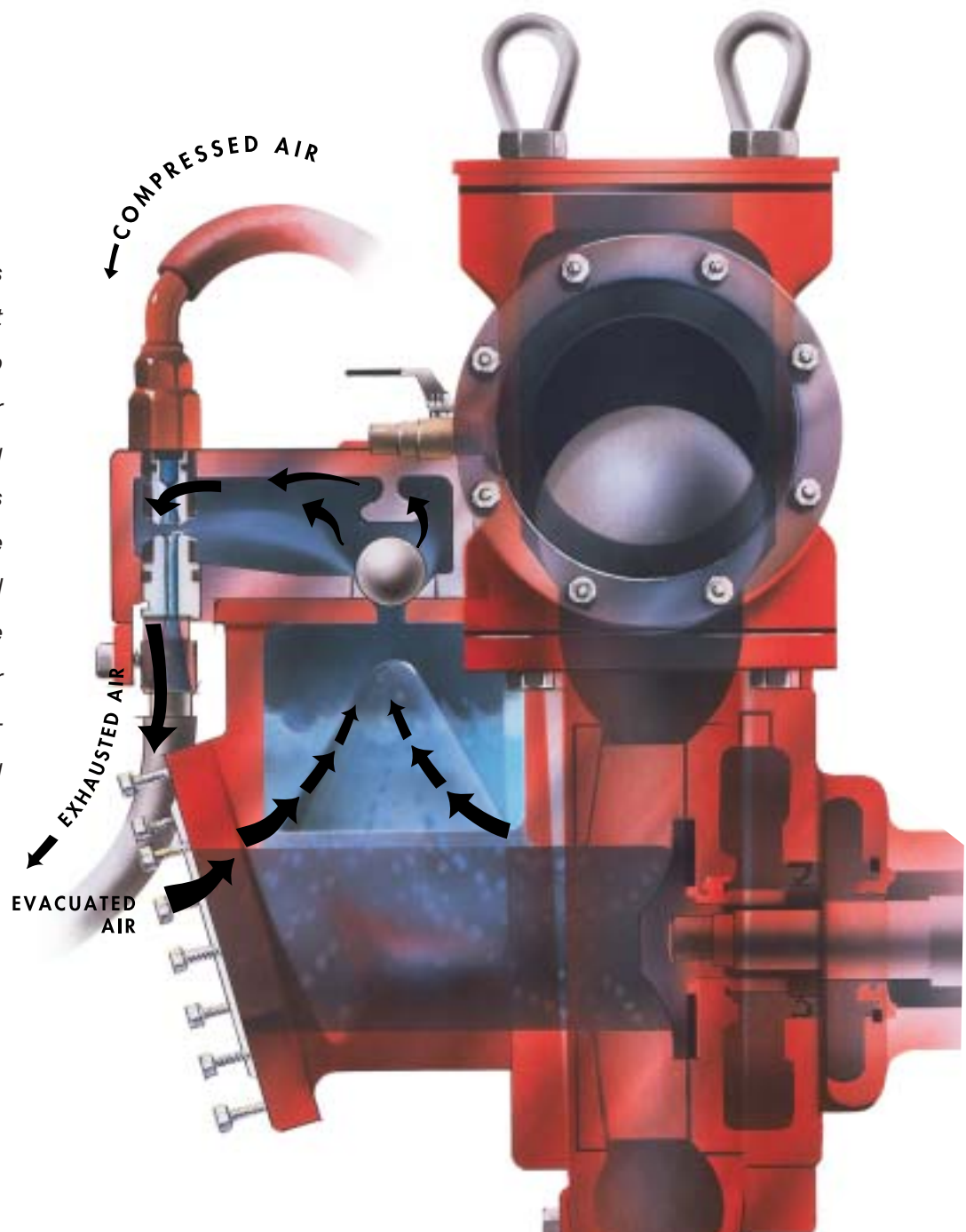
| Item | Description |
|------|---|
| 1 | 150mm x 6M header pipe with (6) 50mm QD fittings for wellpoints 200mm x 6M header pipe with (6) 50mm QD fittings for wellpoints |
| 2 | 150mm x 3M header pipe with (3) 50mm QD fittings for wellpoints |
| 3 | 50mm straight Swing arm assembly, 50mm male QD x 2" male QD with globe valve 50mm 90° Swing arm assembly, 50mm male QD x 50mm male QD with globe valve |
| 4 | 38mm steel riser extension pipe |
| 5 | Self-jetting wellpoint with screen, .9M long |
| 6 | 50mm male end cap, QD |

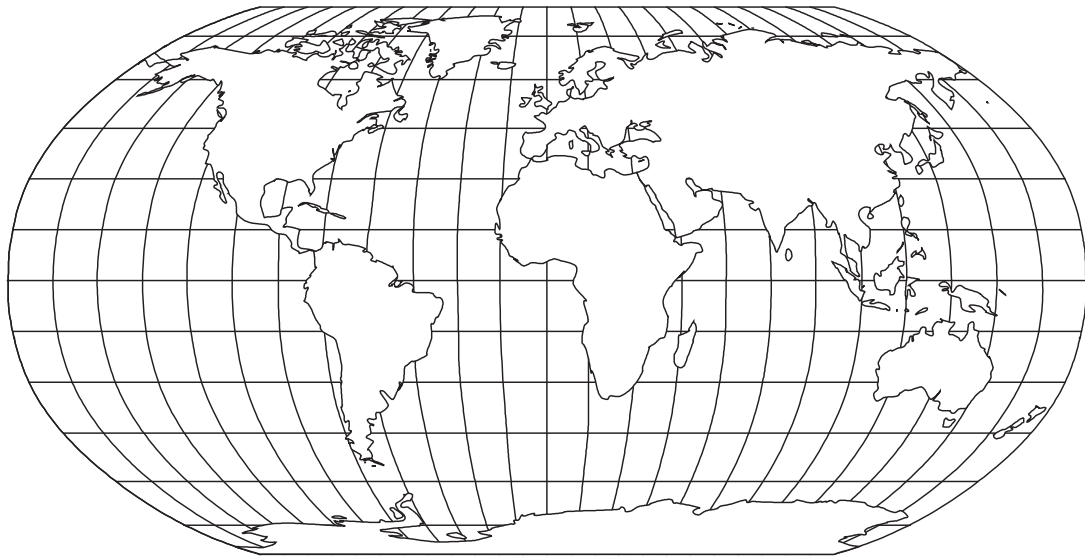


What is 'Dri-Prime®'?

- A fully automatic self priming pump.
- Self priming completely from dry with long suction lines.
- Handles air/liquid mixtures.
- Rapid priming and repriming in snore conditions.
- Solids handling.
- No moving parts in priming system – no need for floats and no complications.
- Operation by unskilled personnel.
- Simple maintenance – can be carried out in the field by one man.
- For dewatering, sewage, sewage sludge, industrial slurries and drainage, and in scavenging situations.
- Electric driven versions are available, either with built-in compressor or arranged for on-site or shop air to operate the priming system.

Compressed air is blown through a jet into a tapered tube to create a vacuum, air from the pump casing and suction line is drawn in with the compressed air and exhausted to the atmosphere. Water replaces the air – automatically priming the pump.





Godwin Pumps Are Available Worldwide!

Call the distributor listed below, or call our home office nearest you.
We will work with you to meet your needs.



A quarter century of sales expertise, a century of design excellence.

godwin
pumps®



Home Offices

One Floodgate Road, Bridgeport, NJ 08014, USA

Telephone +1 (856) 467-3636 • Fax +1 (856) 467-4841 • sales@godwinpumps.com • www.godwinpumps.com

Quenington, Cirencester, Gloucestershire, GL7 5BX, England

Telephone +44 (0)1285 750271 • Fax +44 (0)1285 750352 • sales@godwinpumps.co.uk • www.godwinpumps.co.uk

Distributed By: